



高旭机电

GAO XU MACHINERY

高品质精密零部件·专业化生产智造商

HIGH QUALITY PRECISION PARTS AND SPECIALIZED
PRODUCTION OF INTELLIGENT MANUFACTURERS

苏州高旭机电有限公司
Suzhou Gao Xu Electrical Co.,Ltd



高旭机电
GAO XU MACHINERY

公司简介 COMPANY PROFILE

苏州高旭机电有限公司，成立于2012年，位于中国江苏苏州市吴中区临湖镇东山大道4388号；厂房面积8000平方米。公司主营：专注智能制造、新能源、人工智能、智能终端、工程机械、光伏自动化、3C自动化、液压精密零部件制作、汽车工程件一系列非标产品的精密加工。产品行业涵盖汽车、医疗、新能源、工程机械与农机液压配件、物流工业、通讯系列以及精密锻造坯件等。

出口远销欧洲、南北美洲、大洋洲、日本、韩国、东南亚等国家和地区。现已成为众多国内外著名品牌客户的优质战略合作伙伴。

公司拥有雄厚的技术力量和先进的管理水平，国外先进的技术水平和管理经验，同时还拥有多位高素质管理人才和设计工程师，从设计到生产制作严格把关。目前现有员工80多人，工程师30人，研发10人，技术势力雄厚。

高旭将一直致力于为客户更快更好的提供产品定制化服务，与您共赢一起“携手创未来”！

Suzhou Gaoxu Electromechanical Co., LTD., founded in 2012, is located at No. 4388 Dongshan Avenue, Linhu Town, Wuzhong District, Suzhou City, Jiangsu Province, China; Plant area of 8000 square meters. The company's main business: focus on intelligent manufacturing, new energy, artificial intelligence, intelligent terminal, construction machinery, photovoltaic automation, 3C automation, hydraulic precision parts production, automotive engineering parts a series of non-standard product precision processing. The product industry covers automobile, medical, new energy, construction machinery and agricultural machinery hydraulic parts, logistics industry, communication series and precision forging blanks.

Exports are exported to Europe, North and South America, Oceania, Japan, Korea, Southeast Asia and other countries and regions. Now it has become a high-quality strategic partner for many famous brand customers at home and abroad.

The company has strong technical force and advanced management level, foreign advanced technical level and management experience, but also has a number of high-quality management personnel and design engineers, from design to production strict control. At present, there are more than 80 employees, 30 engineers, 10 R & D people, strong technical force.

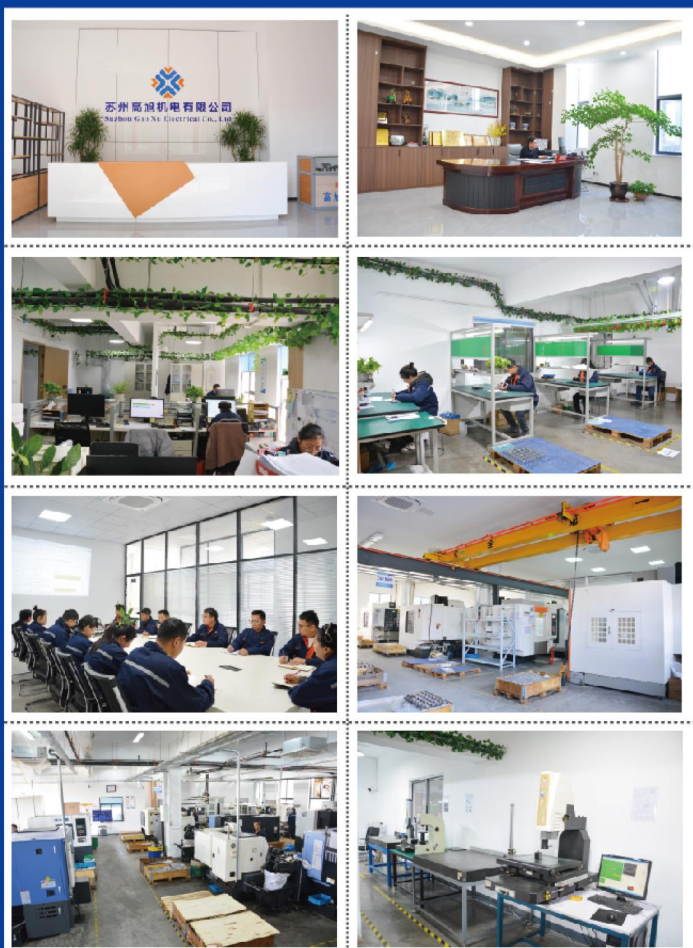
Gao Xu will always be committed to providing customers with faster and better product customization services, and win-win with you "hand in hand to create the future"!



办公环境 OFFICE ENVIRONMENT

规模化高精密零部件生产智造商

Intelligent Manufacturer Of Large-scale High-precision Parts Production



【企业理念: Corporate philosophy】

第一次就把事情做好，持之以恒，做一个靠谱的人。
Do it right the first time, persevere, and be a reliable person.

【企业价值观 Corporate values】

诚实客观 开放包容 沟通协作 快乐至善 创新精进
Honest, objective, open and inclusive communication, cooperation, happiness, innovation and progress.

【企业使命 Enterprise mission】

成就客户 成就公司 成就员工
Achievements Customer Achievements Company achievements employees

【企业愿景 Corporate vision】

不断精进 持续创新 成为行业创导者
Continuous improvement and continuous innovation to become the industry leader

敢于创新，永不言弃，自强不息。

Dare To Innovate, Never Give Up, Self-improvement.



高旭机电
GAO XU MACHINERY

发展历程

DEVELOPMENT COURSE

公司投入ERP MES管理系统，先后通过ISO14001环境管理体系认证，OHSAS18001职业健康安全管理体系认证，IATF16949质量管理体系认证。

The company invested in ERP MES management system, has passed ISO14001 environmental management system certification, OHSAS18001 occupational health and safety management system certification, IATF16949 quality management system certification.

经过三年的发展，高旭员工由10人发展到25人，从而形成流程化、标准化、体系化，并在同年通过ISO9001质量体系认证。

After three years of development, Gaoxu employees from 10 to 25 people, so as to form a process, standardization, systematization, and passed the ISO9001 quality system certification in the same year.

2018

2015

2016

2012

公司开设海外业务，产品出口欧美国家，投入数十台精密设备机械，硬件实力获得外国客户的赞美，同年国外订单不断增长。

The company set up overseas business, products exported to Europe and the United States, invested dozens of precision equipment machinery, hardware strength won the praise of foreign customers, the same year foreign orders continue to grow.

公司成立于2012年2月，创立了“高旭”，投入第一批普通数控机床生产设备，并不断扩增厂区规模。

The company was founded in February 2012, founded "Gao Xu", invested in the first batch of ordinary CNC machine tool production equipment, and continue to expand the size of the factory.

荣获国家级创新型中小企业称号，次年获得科技型、高新技术企业称号。

Won the title of national innovative small and medium-sized enterprises, the next year won the title of science and technology, high-tech enterprises.

2022

2024→至今

2020

搬入购置新厂面积8000多平方，销售业绩不断增长，在职员工80多名，在国际化的大背景下，高旭将继续与时俱进，不断提升自我竞争力，同时为客户提供更好的服务。

Moved into the purchase of new plant area of more than 8000 square meters, the sales performance continues to grow, more than 80 employees, in the context of internationalization, Gao Xu will continue to advance with The Times, constantly improve self-competitiveness, while providing customers with better service.

高旭综合能力逐步提升，客户结构不断稳定优化，并成为众多客户的优质战略合作伙伴，2020年成立武汉高旭机电有限公司，投入引进多种进口精密仪器和加工生产设备，组建扩大加工中心。

Gaoxu's comprehensive capability has been gradually improved, its customer structure has been steadily optimized, and it has become a high-quality strategic partner for many customers. In 2020, Wuhan Gaoxu Mechanical and Electrical Co., Ltd. has been established to introduce a variety of imported precision instruments and processing and production equipment, and set up and expand the processing center.



发展历程

DEVELOPMENT COURSE



高旭机电
GAOXU MACHINERY

荣誉资质 HONOR AND QUALIFICATION



高旭 **多** 年内资质证书

GAOXU YEARS OF QUALIFICATION
CERTIFICATE



- 2023年11月27日获得了由江苏省科学技术厅、江苏省财政厅、国家税务总局江苏省税务局联合颁发的“国家高新技术企业”认定证书，由此正式迈入国家高新技术企业行列。同时，在全体技术人员共同努力下，我们取得了诸多《实用新型专利证书》及《计算机软件著作权登记证书》。
- On November 27, 2023, it obtained the certificate of "National High-tech Enterprise" jointly issued by Jiangsu Provincial Department of Science and Technology, Jiangsu Provincial Department of Finance and Jiangsu Provincial Tax Bureau of the State Administration of Taxation, which officially entered the ranks of national high-tech enterprises. At the same time, with the joint efforts of all technical personnel, we have obtained a lot of "Utility model patent Certificate" and "Computer software Copyright Registration Certificate".





荣誉证书



体系证书 SYSTEM CERTIFICATE





高旭机电
GAO XU MACHINERY

加工设备介绍

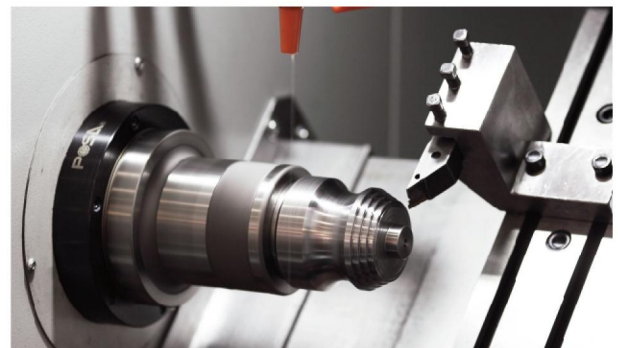
PROCESSING EQUIPMENT INTRODUCTION



局部车间 / Local Workshop



智能管理系统
Intelligent Management System



高光加工展示
Highlight Processing Display



高精度四轴数控加工中心

High Precision Four-axis
CNC Machining Center



高精度复合数控加工中心

High Precision Compound
Cnc Machining Center



高精度数控平面磨床

High Precision Cnc
Surface Grinding Machine



韩国威亚数控车床

South Korea Wiya NC lathe



韩国斗山数控车床

South Korea Doosan NC lathe



日本金和精密车床

Japanese Gold And
Precision Lathes



数控线切割

CNC Wire-Cutting



数控锯床

CNC Sawing Machine



数控铣床

CNC Milling Machine



高旭机电
GAO XU MACHINERY

部分车间展示

PARTIAL WORKSHOP DISPLAY



CNC智造区
Cnc Intelligent
Manufacturing Area



车铣数控智造区
Turning And Milling Cnc
Intelligent Manufacturing Area



非标自动化组装区
Non-standard Automated Assembly Area



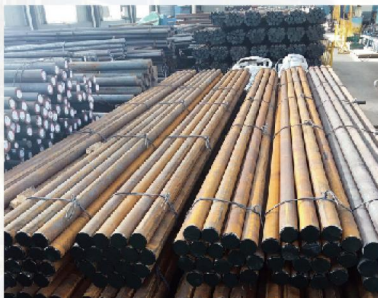
NC智造区
Nc Intelligent
Manufacturing Area



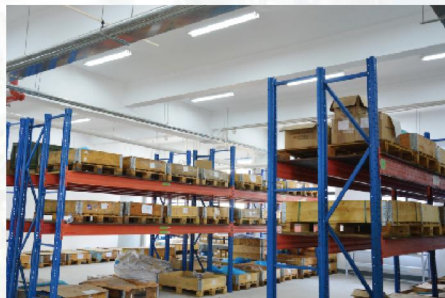
线切割智造区
Wire-cut Intelligent
Manufacturing Area



普铣智造区
General Milling Intelligent Area



原材料/Raw Material



仓库/Stash



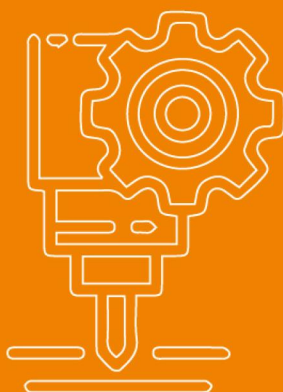
超声波清洗
Ultrasonic Cleaning

检测设备介绍

INTRODUCTION OF TESTING EQUIPMENT



瑞士三坐标
Swiss Coordinate



投影仪
Projector



瑞士高度仪
Swiss Altimeter



三丰粗糙度仪
Mitotoyo Roughness Meter



硬度计
Durometer



盐雾试验机
Salt Spray Tester



高旭机电
GAO XU MACHINERY

加工设备/检测设备

Processing Equipment/Testing Equipment



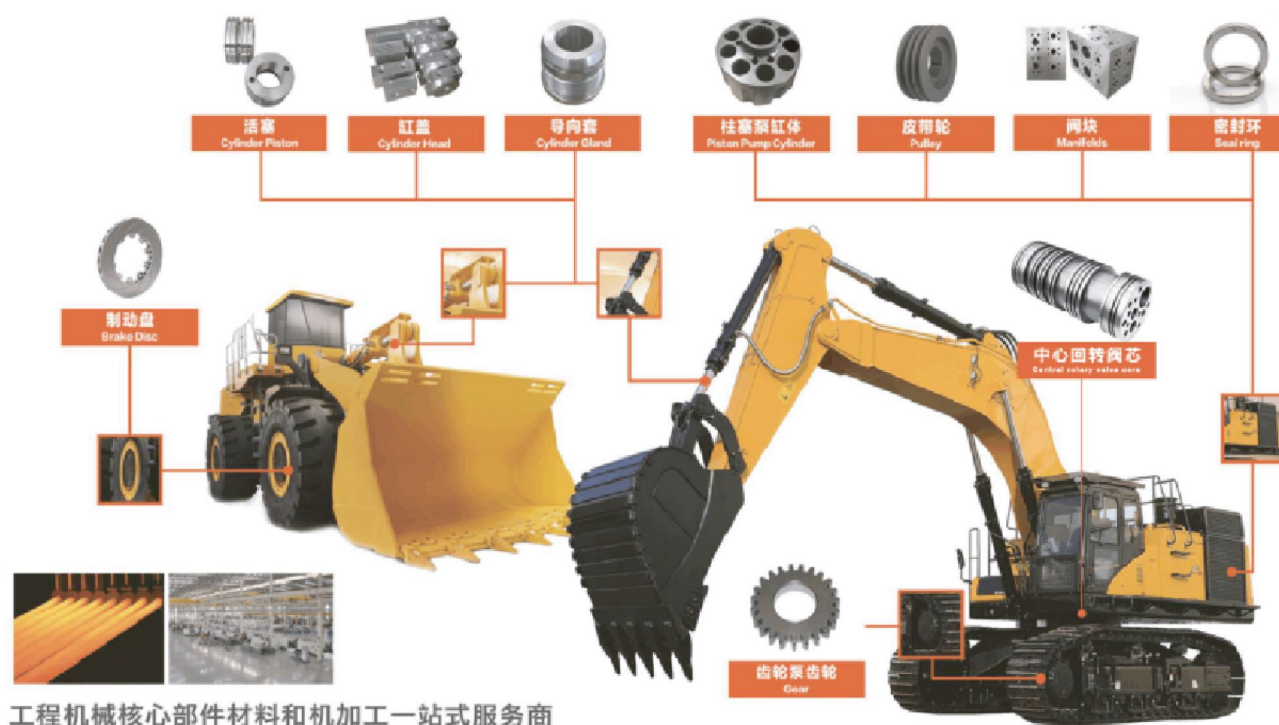
设备清单 Equipment list

加工设备 Processing Equipment	精度 Precision	数量 Quantity	检测设备 Testing Equipment	产地 Place Of Origin.	数量 Quantity
CNC	0.005	20台	三坐标 Three-Dimensional	瑞士	2台
NC	0.005	18台	2.5次元 2.5 Dimension	瑞士	1台
炮台铣床 Turret Milling Machine	0.02	10台	投影仪 Projector	国产	1台
磨床 Grinding Machine	0.005	4台	粗糙度仪 Roughness Meter	日本	1台
钻床 Drilling Machine	0.1	3台	硬度计 Durometer	国产	1台
普车 General Coach	0.005	5台			
线切割 Wire-Cut	0.005	12台			
焊机 Welding Machine		4台			

注：高度规、千分卡、卡尺（三丰），所有量具都有经第三方效验。

Note: Height gauge, micrometer, caliper (Mitotoyo), all gauges have been validated by a third party.

工程机械行业 Construction Machinery Industry



工程连接件
Engineering Connector



万向节
Cardan Joint



法兰
Francois



压盖
Gland



斜阀块
Angle valve Block



动力头阀块
Power Head Valve Block



回程盘
Return Plate



缸盖
Cylinder Cover



高旭机电
GAO XU MACHINERY

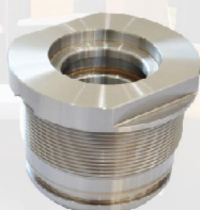
液压行业 Hydraulic Industry



活塞
Piston



导向套
Gland



导向套
Gland



端盖
Gland



活塞
Piston



活塞
Piston



活塞
Piston



底盖
Endcap

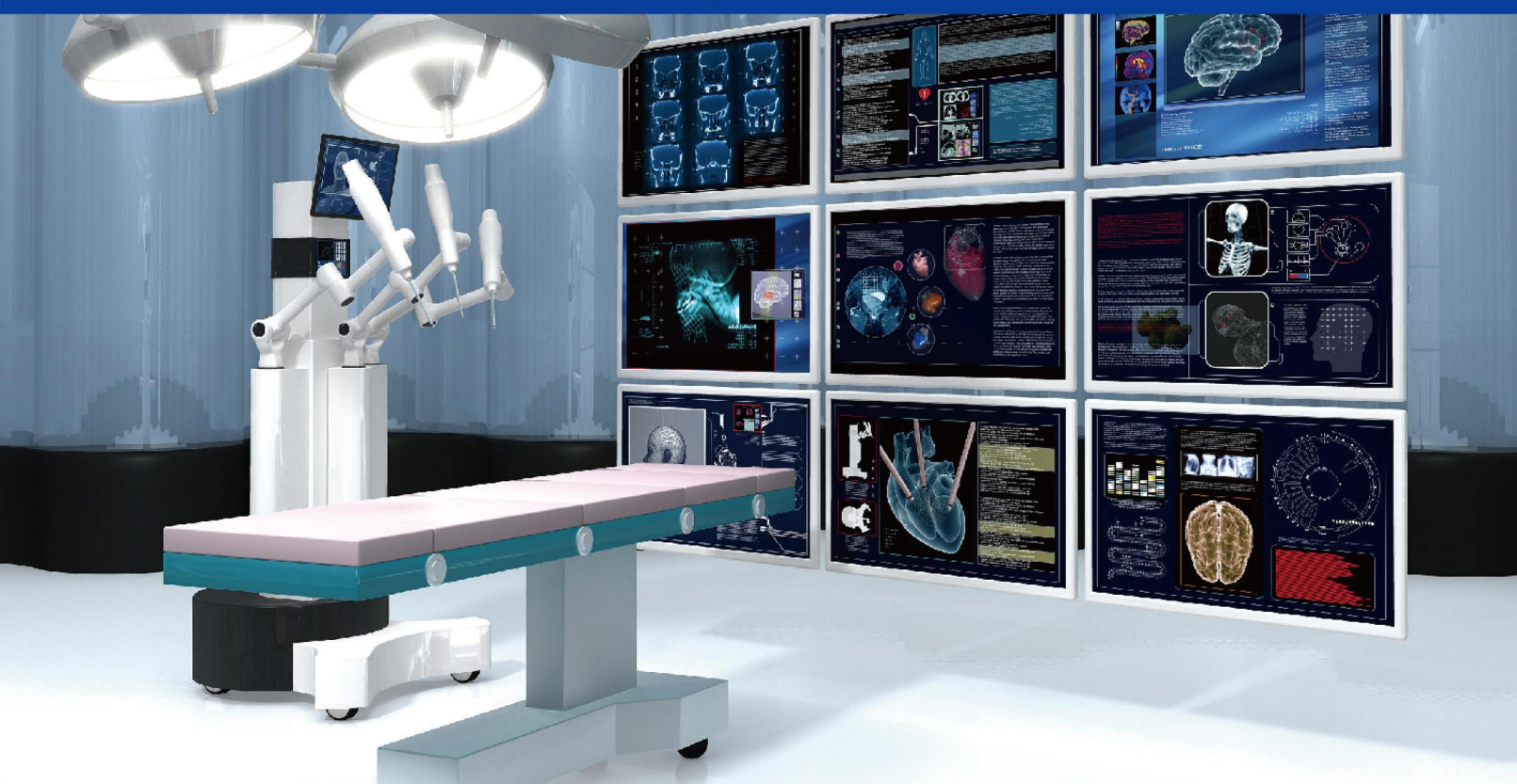


叉子
Endcap



缸头连接件
Rodeye

医疗行业 Medical Industry



医疗行业零配件 Parts For The Medical Industry



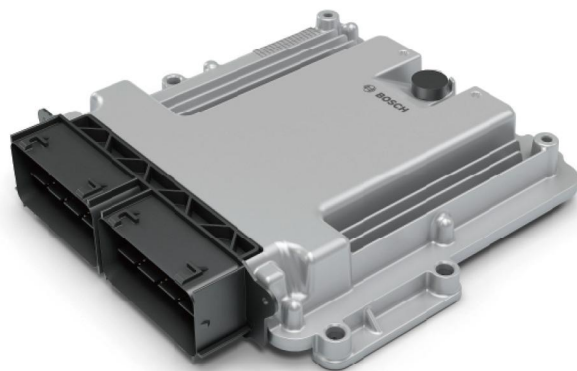
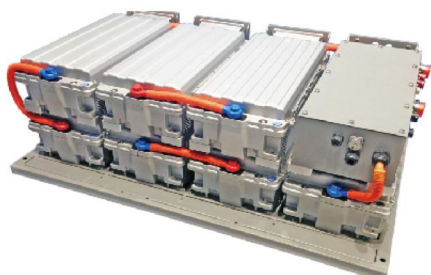


高旭机电
GAO XU MACHINERY

新能源汽车行业 Construction Machinery Industry



锂电动力单元
Lithium Electric Power Unit



汽车轮毂单元
Car Wheel Housing Unit



新能源零部件
New Energy Components





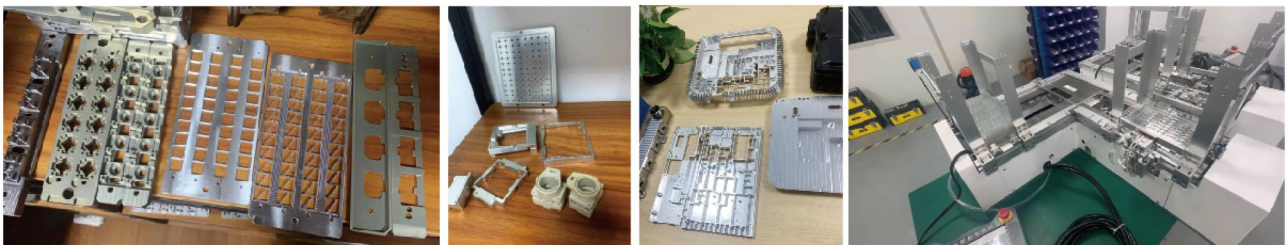
k k qm "gr"
 aykənz rns (aykənz rns)
 lut əzd k: 38v;
 n k-kənz: 46vd;
 lut əz kənz: hug;
 əzdəg ylus : əvklə gyk;

 32473428s k qm "gr"
 aykənz r n4, aykənz r n5, aykənz r n6,
 aykənz r n7, aykənz r n8 (aykənz r n5)
 s gəz : 52vd 2, 52v, 42
 vq j l a m 2: 52v, 42

 32473428s k qm "gr"
 n6 (aykənz r n6)
 lut əzd k: 31vd;
 n k-kənz: t u s g;

 32473428s k qm "gr"
 n3, n4, n5, n6, n7, n8 (aykənz r n5)
 vq j l a m 32vd 2 42vd 2vd;
 l u s g: 477v;
 lut əz kənz: s n kəp;

 32473428s k qm "gr"
 k n1, k n2, k 3, k 4, k 5, k 6, k 7, k 8, k 9, k 10, k 11, k 12, k 13, k 14, k 15, k 16, k 17, k 18, k 19, k 20, k 21, k 22, k 23, k 24, k 25, k 26, k 27, k 28, k 29, k 30, k 31, k 32, k 33, k 34, k 35, k 36, k 37, k 38, k 39, k 40, k 41, k 42, k 43, k 44, k 45, k 46, k 47, k 48, k 49, k 50, k 51, k 52, k 53, k 54, k 55, k 56, k 57, k 58, k 59, k 60, k 61, k 62, k 63, k 64, k 65, k 66, k 67, k 68, k 69, k 70, k 71, k 72, k 73, k 74, k 75, k 76, k 77, k 78, k 79, k 80, k 81, k 82, k 83, k 84, k 85, k 86, k 87, k 88, k 89, k 90, k 91, k 92, k 93, k 94, k 95, k 96, k 97, k 98, k 99, k 100, k 101, k 102, k 103, k 104, k 105, k 106, k 107, k 108, k 109, k 110, k 111, k 112, k 113, k 114, k 115, k 116, k 117, k 118, k 119, k 120, k 121, k 122, k 123, k 124, k 125, k 126, k 127, k 128, k 129, k 130, k 131, k 132, k 133, k 134, k 135, k 136, k 137, k 138, k 139, k 140, k 141, k 142, k 143, k 144, k 145, k 146, k 147, k 148, k 149, k 150, k 151, k 152, k 153, k 154, k 155, k 156, k 157, k 158, k 159, k 160, k 161, k 162, k 163, k 164, k 165, k 166, k 167, k 168, k 169, k 170, k 171, k 172, k 173, k 174, k 175, k 176, k 177, k 178, k 179, k 180, k 181, k 182, k 183, k 184, k 185, k 186, k 187, k 188, k 189, k 190, k 191, k 192, k 193, k 194, k 195, k 196, k 197, k 198, k 199, k 200, k 201, k 202, k 203, k 204, k 205, k 206, k 207, k 208, k 209, k 210, k 211, k 212, k 213, k 214, k 215, k 216, k 217, k 218, k 219, k 220, k 221, k 222, k 223, k 224, k 225, k 226, k 227, k 228, k 229, k 230, k 231, k 232, k 233, k 234, k 235, k 236, k 237, k 238, k 239, k 240, k 241, k 242, k 243, k 244, k 245, k 246, k 247, k 248, k 249, k 250, k 251, k 252, k 253, k 254, k 255, k 256, k 257, k 258, k 259, k 260, k 261, k 262, k 263, k 264, k 265, k 266, k 267, k 268, k 269, k 270, k 271, k 272, k 273, k 274, k 275, k 276, k 277, k 278, k 279, k 280, k 281, k 282, k 283, k 284, k 285, k 286, k 287, k 288, k 289, k 290, k 291, k 292, k 293, k 294, k 295, k 296, k 297, k 298, k 299, k 300, k 301, k 302, k 303, k 304, k 305, k 306, k 307, k 308, k 309, k 310, k 311, k 312, k 313, k 314, k 315, k 316, k 317, k 318, k 319, k 320, k 321, k 322, k 323, k 324, k 325, k 326, k 327, k 328, k 329, k 330, k 331, k 332, k 333, k 334, k 335, k 336, k 337, k 338, k 339, k 340, k 341, k 342, k 343, k 344, k 345, k 346, k 347, k 348, k 349, k 350, k 351, k 352, k 353, k 354, k 355, k 356, k 357, k 358, k 359, k 360, k 361, k 362, k 363, k 364, k 365, k 366, k 367, k 368, k 369, k 370, k 371, k 372, k 373, k 374, k 375, k 376, k 377, k 378, k 379, k 380, k 381, k 382, k 383, k 384, k 385, k 386, k 387, k 388, k 389, k 390, k 391, k 392, k 393, k 394, k 395, k 396, k 397, k 398, k 399, k 400, k 401, k 402, k 403, k 404, k 405, k 406, k 407, k 408, k 409, k 410, k 411, k 412, k 413, k 414, k 415, k 416, k 417, k 418, k 419, k 420, k 421, k 422, k 423, k 424, k 425, k 426, k 427, k 428, k 429, k 430, k 431, k 432, k 433, k 434, k 435, k 436, k 437, k 438, k 439, k 440, k 441, k 442, k 443, k 444, k 445, k 446, k 447, k 448, k 449, k 450, k 451, k 452, k 453, k 454, k 455, k 456, k 457, k 458, k 459, k 460, k 461, k 462, k 463, k 464, k 465, k 466, k 467, k 468, k 469, k 470, k 471, k 472, k 473, k 474, k 475, k 476, k 477, k 478, k 479, k 480, k 481, k 482, k 483, k 484, k 485, k 486, k 487, k 488, k 489, k 490, k 491, k 492, k 493, k 494, k 495, k 496, k 497, k 498, k 499, k 500, k 501, k 502, k 503, k 504, k 505, k 506, k 507, k 508, k 509, k 510, k 511, k 512, k 513, k 514, k 515, k 516, k 517, k 518, k 519, k 520, k 521, k 522, k 523, k 524, k 525, k 526, k 527, k 528, k 529, k 530, k 531, k 532, k 533, k 534, k 535, k 536, k 537, k 538, k 539, k 540, k 541, k 542, k 543, k 544, k 545, k 546, k 547, k 548, k 549, k 550, k 551, k 552, k 553, k 554, k 555, k 556, k 557, k 558, k 559, k 560, k 561, k 562, k 563, k 564, k 565, k 566, k 567, k 568, k 569, k 570, k 571, k 572, k 573, k 574, k 575, k 576, k 577, k 578, k 579, k 580, k 581, k 582, k 583, k 584, k 585, k 586, k 587, k 588, k 589, k 590, k 591, k 592, k 593, k 594, k 595, k 596, k 597, k 598, k 599, k 600, k 601, k 602, k 603, k 604, k 605, k 606, k 607, k 608, k 609, k 610, k 611, k 612, k 613, k 614, k 615, k 616, k 617, k 618, k 619, k 620, k 621, k 622, k 623, k 624, k 625, k 626, k 62



自动化设备

Automation Equipment



合作伙伴

Cooperative Partner

超越客户预期 创造价值创新

EXCEED CUSTOMER EXPECTATIONS VALUE-CREATING INNOVATION



注：排名不分先后

Note: Ranked in no particular order